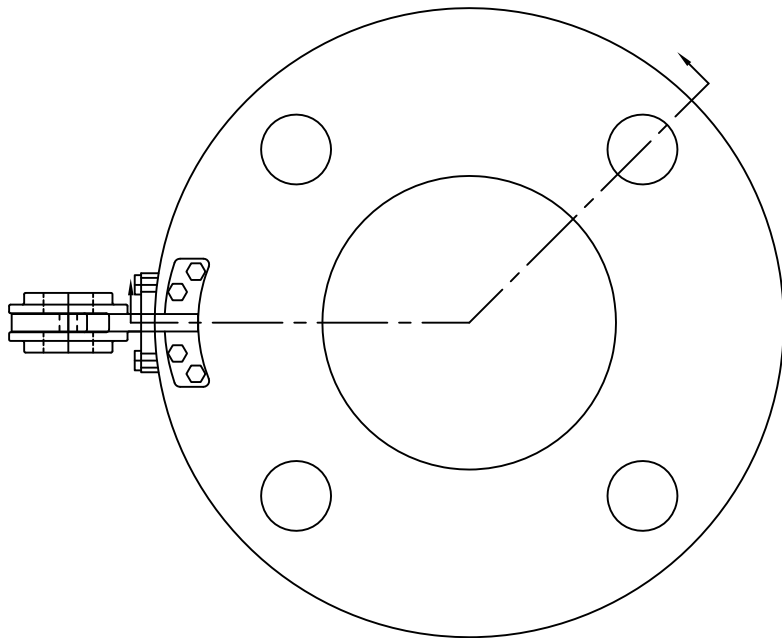
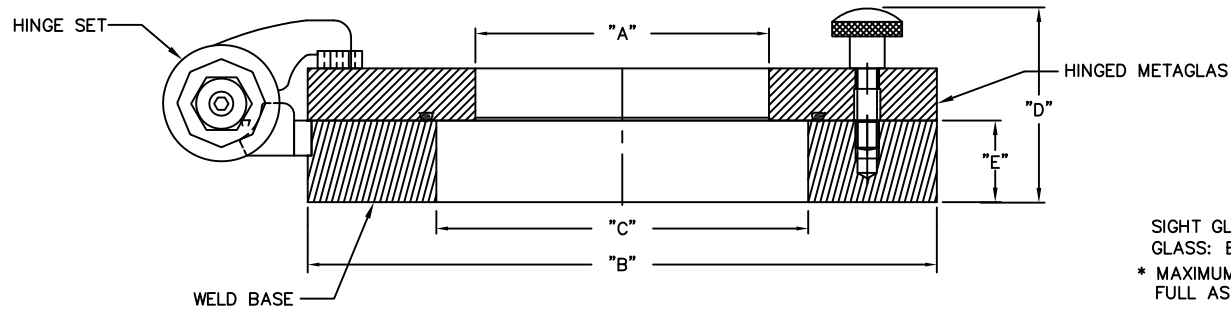


A-140W



NOTES:
1. ALL DIMENSIONS IN INCHES UNLESS OTHERWISE SPECIFIED.

SIZE	A	B	C	D	E
3"	2.76"	7.48"	3.13"	2.85"	1.18"
4"	3.94"	8.98"	4.13"	2.85"	1.18"
6"	5.51"	10.98"	6.00"	3.30"	1.42"
8"	6.30"	13.50"	8.00"	3.30"	1.42"



SIGHT GLASS FUSED TO METAL CONFORMING TO DIN 7079
GLASS: BOROSILICATE TO DIN 7080

* MAXIMUM TEMPERATURE IS FOR METAGLAS DISC ONLY.
FULL ASSEMBLY TEMPERATURE DEPENDENT ON GASKET MATERIAL

RING MATERIAL	MAX WORKING TEMP. *
CARBON STEEL (1.0570)	536°F (280°C)
DUPLEX STAINLESS STEEL (1.4462)	536°F (280°C)
HASTELLOY C-22 (2.4610)	536°F (280°C)

REVISION

NO.



P.O. BOX 1116
2396 EDISON BLVD.
TWINSBURG, OH 44087

UNLESS OTHERWISE SPECIFIED
THESE TOLERANCES WILL APPLY:

FRACTIONAL	± 1/16"
.00	± .010
.000	± .005
DEGREES	± 1°

SCALE: None
DATE: XX-XX-XX
BY: XXX

METAGLAS HINGED SIGHT
GLASS - WELD ON STYLE

A-140W

REV.